

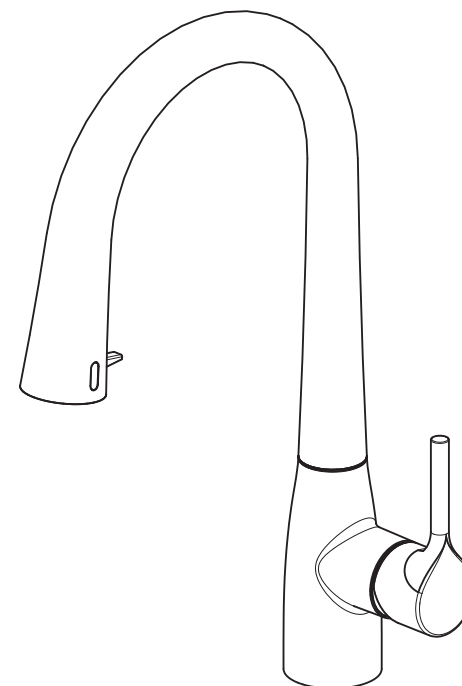
## Trouble shooting

Symptom	Failure cause	Recommended action
Water does not flow and red LED does not blink	Battery placement is incorrect	Ensure the batteries are installed properly. Check the orientation of each battery matches the positive (+) and negative (-) symbols shown on the battery compartment.
	Cable connection is incorrect	Ensure all the cables are connected properly, according to the installation steps.
	Power is OFF	Turn on the power
	Wire is torn off	Reconnect wires, or replace the part
Water does not flow and red LED blinks	No water supply	Turn on the water supply
	The cable connection of the solenoid valve is incorrect	Ensure the cable is connected properly
	The filter is clogged	Clean the filter
	The solenoid valve is clogged	Clean the solenoid valve
Water does not flow	troubleshooting based on the phenomenon of "no water comes out of sensing" and then check whether the sensing distance is too long or the sensing distance or is too short.	
Water continues to drip after user is no longer detected	The sensor distance is too long or too short	Adjust the sensor distance according to the installation environment
	Solenoid valve is clogged	Clean the solenoid valve
Turn on and off automatically when not in use	The sensor distance is too long	Adjust the sensor distance according to the installation environment
	Affected by the environment	Avoid direct light or reflections (such as strong light or a mirror)

# Product Manual

## Instruction

Pull-out kitchen faucet



Please read the instructions carefully before use

## Product Functions and Features

- Infrared sensor kitchen faucet.
- Infrared sensor hand lift switch water.
- Improve water and energy use efficiency.
- The installation process is simple.

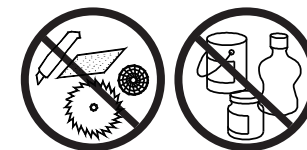
## Specification

Model No.	SH0149-SD
Power supply	DC: 4 AA alkaline batteries (LR06×4) AC: input 220V/50Hz, output 6V/300mA power adapter
Water pressure	0.05 - 0.8 ( MPa )
Water temperature	≤75°C
Inlet pipe size	G1/2 ( DN15 )
Opening and closing time	Open: ≤1s; Close: ≤1.5s
Time off water	If used for a long time and exceeds 180±10% s, the water will be automatically turned off.
Sensing distance	Faucet sensor: 20cm±10% Hand lift sensor: 8cm±10%
Power consumption	DC: Standby mode≤0.6mW AC: Standby mode≤2W; Work mode≤4W

## Product Maintenance

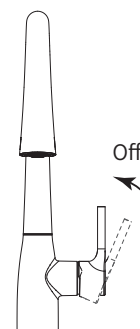
### ■ Maintenance Instructions:

Our products are metal products, so we need you to pay attention to prevent them from being scratched. We recommend cleaning the product with a soft damp cloth. Do not use strong corrosive detergents to clean the product.

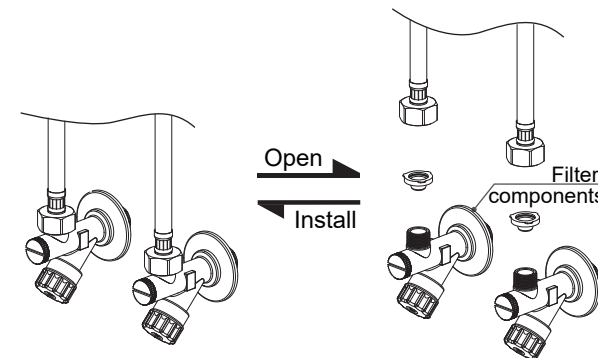


■ Please ensure that the filter is cleaned every 6 months.

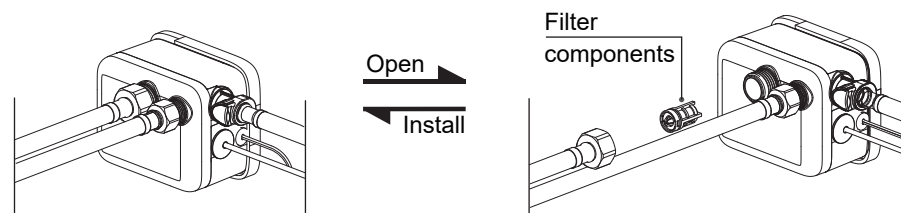
1. Turn off the faucet handle.



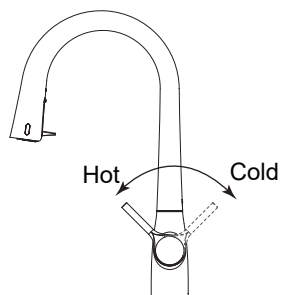
2. Close the angle valve, unscrew the red/blue braided hose, take out the filter, and brush it clean with a brush. After cleaning the filter, reinstall the filter as it was and tighten the water inlet hose.



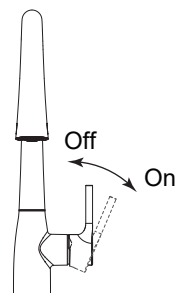
3. As shown in the picture, unscrew the G1/2 braided hose, take out the filter, brush it clean with a brush, reinstall the filter as it is, and tighten the hose.



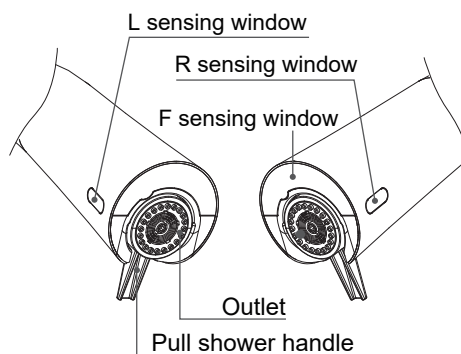
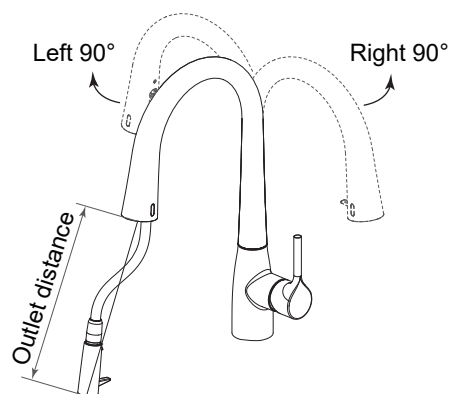
## Instructions for use



- Turn the handle left and right to adjust the water temperature of the faucet.



- Turn the handle up and down to switch on-off the water.



### Function Introduction:

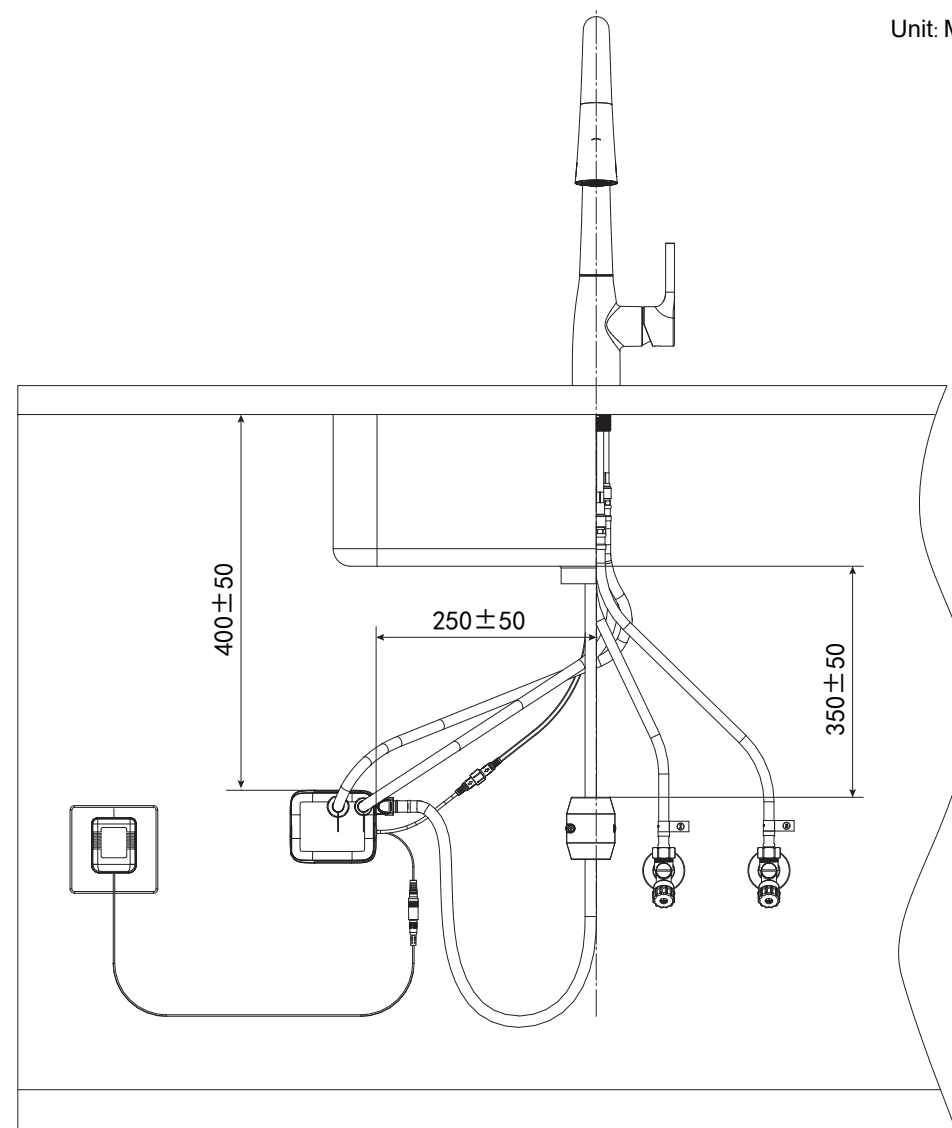
- Turn the handle up and down to switch on-off the water.

Only if the handle is off, can the tap be controlled by sensing window:

- Instant water: Put hand and sense F induction window, instant water come out. Hands off the faucet, the water will be turned off automatically.
- Constant water: Sensing window L or window R, constant water will automatically come out the longest water outlet time is  $180 \pm 10\%$  seconds. When you need to close the constant water, you can arbitrarily raise the induction window L or window R, and the faucet can immediately turn off the water.
- Pulling-out water: Pull shower head down, the faucet will turn on the water immediately. Release the shower head, it will reset and turn off the water automatically.

## instructions

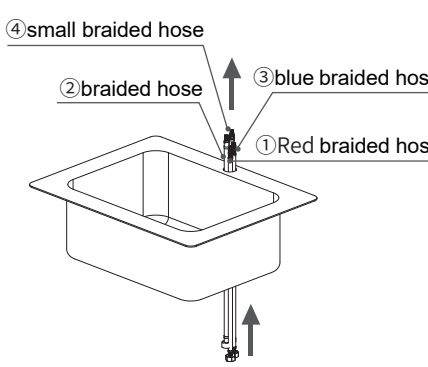
Unit: MM



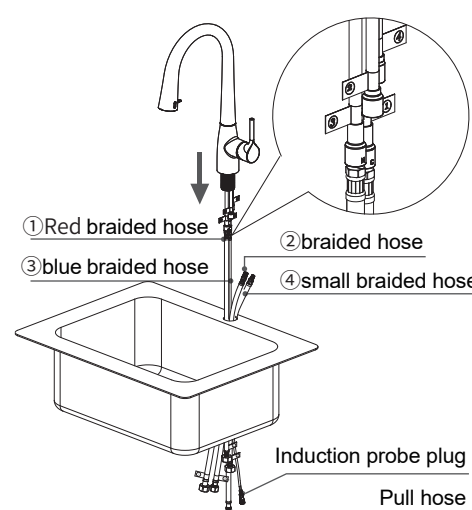
## Installation steps — Faucet installation

Note: If all the illustrations of the installation steps are inconsistent with the actual product, please refer to the actual product.

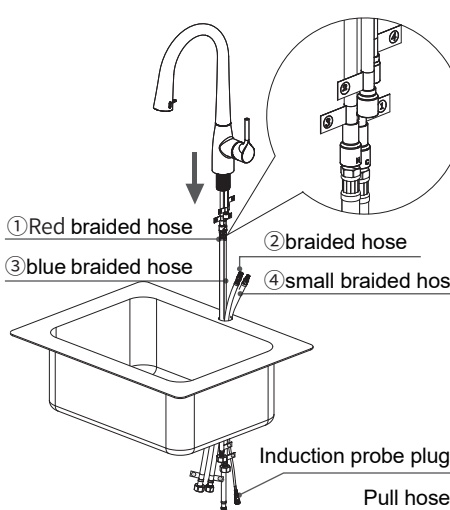
**1** ④ braided hoses need to be passed through the sink installation holes from the bottom of the sink as shown in the picture. Note: The diameter of the mounting hole is  $\phi 35\text{mm}$ , and the maximum thickness does not exceed 25mm.



**2** As shown in the picture, take out the faucet and thread the suction hose/induction probe plug into the installation hole of the sink; Install the red braided hose labeled with label ① and the blue braided hose labeled with label ③ on the water inlet connector labeled with the corresponding label "H"/"C".



**3** Install the braided hose with the ② label and the braided pipe with the ④ label on the faucet joint with the corresponding strain as shown.



## Pitch control method

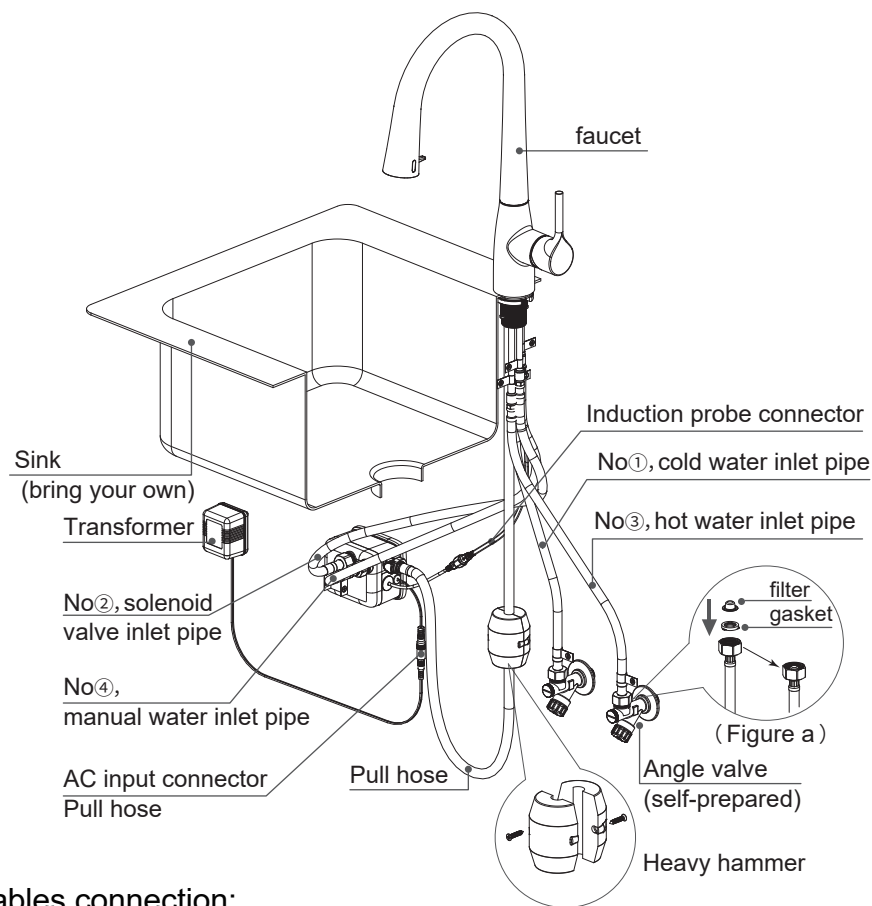


### Remote control distance adjustment:

1. The remote control distance adjustment receiving sensing area is in the L sensing window; L represents the left sensing window; R represents the right hand lift sensing window; F represents the faucet sensing window;
2. When adjusting the distance, the remote control should be aimed at the L sensing window; (the distance between the remote control and the L sensing window is less than 30cm)
3. There are a total of 10 distance adjustment gears for all sensing windows; double flashes at the maximum and minimum gears, and other reception When controlled by the remote control single flash;
4. "+" means: the distance increases; "-" means: the distance decreases;
5. Distance adjustment method: There is no need to put your hand on the sensor window to adjust the distance. Press "+" and "-" and the distance will respond to increase and decrease. decrease, but the distance changes The size is only an approximate size and cannot be precise.
6. Remote control distance adjustable time: The remote control can be adjusted 2 minutes after the product is powered on. If the remote control distance adjustment signal is received, the remote control The adjustable time will be extended for 2 minutes, and will shut down if no remote control signal is received for 2 minutes.



## Installation steps — wiring



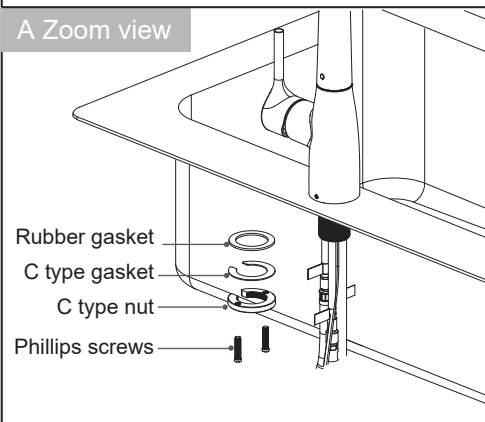
### Cables connection:

1. Take out the filter, put the filter into the gasket as shown in Figure a, put it into the red/blue braided tube movable nut, and put the red/blue braided tube into the gasket. Connect the hoses to the corresponding angle valves at the hot/cold water end and tighten them.
2. Connect the braided hose No. 2 and the small braided hose No. 4 to the corresponding water inlet ports of G1/2 and G3/8 on the control box and tighten them.
3. Connect the quick connector of the pull hose to the quick socket on the control box, and confirm that the connection is in place.
4. Fasten the weight to the pull hose according to the requirements and actual conditions.
5. Connect the induction probe plug and the control box probe wire (the arrows on the plug must be aligned for correct insertion, and tighten the nut).
6. Connect the transformer plug to the control box power plug.

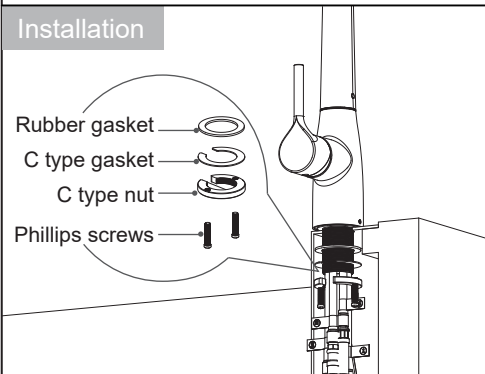
## Installation steps — Faucet installation

- 4 Insert the faucet with four hoses installed into the sink installation hole, and put the rubber gasket, C-type gasket, and C-type nut at the bottom of the sink in sequence. Tighten the C-type nut clockwise, and tighten the two M6 cross screws. Screw on the C-nut and tighten with a Phillips screwdriver until the faucet is completely fixed on the sink.

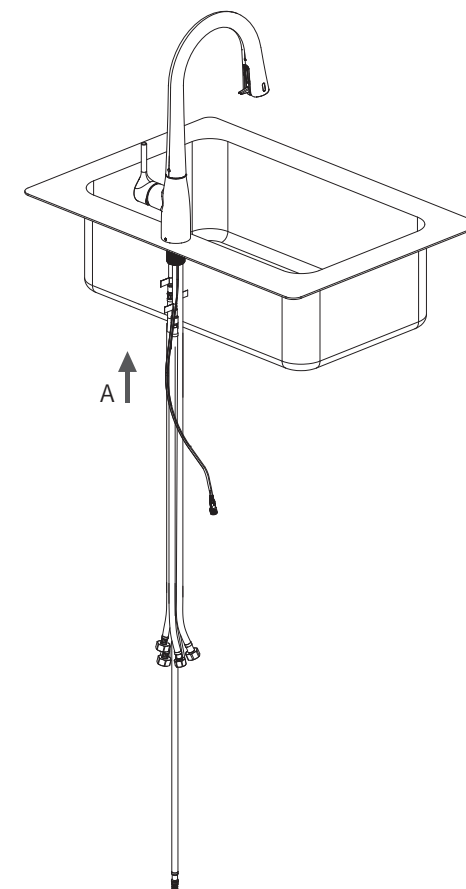
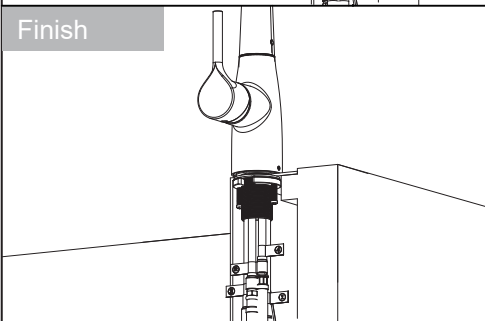
### A Zoom view



### Installation

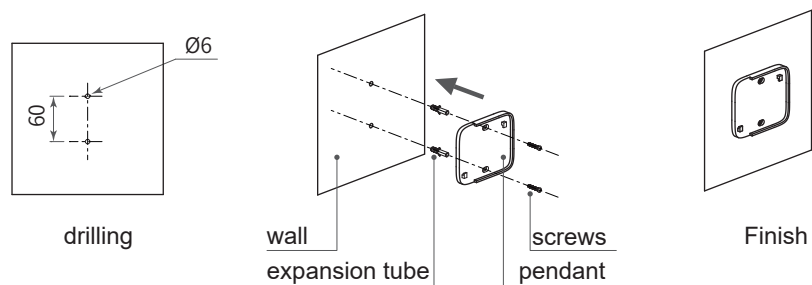


### Finish

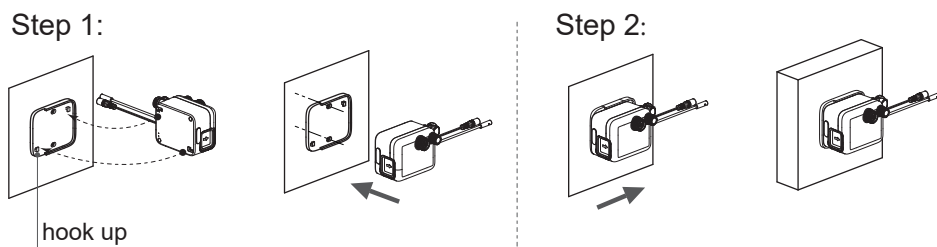


## Installation steps — Control box installation

- 1** 1.1 Drill holes in the wall according to the specifications shown in the figure.  
1.2 Knock the expansion tube into the hole in the wall in sequence, and lock the pendant on the wall with screws.

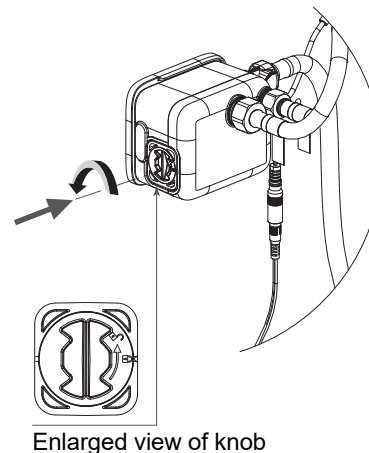


- 2** 2.1 Connect the hook of the pendant to the groove at the bottom of the control box as shown;  
2.2 When the control box is completely flat on the pendant, push it firmly in the direction shown by the arrow until you hear a click sound.

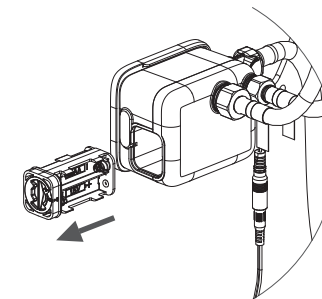


## Installation steps — Battery installation

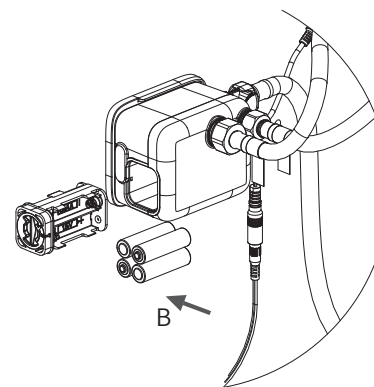
- 1** Turn the left side of the control box counterclockwise as shown in the figure below. Turn the knob and the battery box will pop up as shown in step 2.



- 2** Battery box pops out.



- 3** Put the 4 AA batteries into the battery box in sequence as shown below Inside.



- 4** it into the control box and push the control box in as shown in the figure below display until you hear a crisp click, the power cycle is completed. Pool installation.

NOTE: When replacing the battery, follow steps 1 and 2

